

CONTOUR



UNMISTAKABLY YOURS, DISTINCTLY CONTOUR.

Capability Profile

CONTOURPROJECTS.NET

Completely considered
from every angle.





An experienced and dedicated team.

Truly unique building solutions require an exemplary understanding of each project's complexities. Nic, Bruno and Graeme offer an unrivalled level of expertise in custom home builds and renovations, with an appreciation for the finer details of every build and experience.



Bruno Petrillo
Director



Graeme Davis
Building Manager



Nic Perrella
Special Projects



Sognia Petrillo
Accounts Manager



Best Contract Home
\$1,500,000 – \$2,500,000
Perth, Western Australia



Best Contract Home
\$1,000,000 – \$1,500,000
Perth, Western Australia



Best Alterations & Additions
\$300,000 – \$400,000
Perth, Western Australia



Best Alterations & Additions
Over \$1,000,000
Perth, Western Australia



2018 HIA COLORBOND®
Steel Matt Perth Housing Awards
Custom Built Home \$1,600,000 –
\$3,000,000

From concept to completion



Design

We offer the flexibility to bring your own plans, or we can take care of the entire process from concept design through to construction and handover, where we'll work with you to develop your vision, using our expertise to guide the process.



Document

We will provide open and transparent quotes to ensure clear expectations. We'll discuss your contract and options in detail, help you with your interior selections and arrange all the approvals and insurances essential prior to construction.



Construct

Following approvals, building will commence. Our Director or Special Projects Manager will personally supervise the entire project and liaise directly with you throughout the construction of your home to ensure you receive clear communications and milestone updates.

Discover authentic and inspired spaces where bespoke building methods, features and finishes feel right at home - as will you.

Suffolk St, Fremantle

The design of this Fremantle renovation respects the aesthetic values of the existing 1905 house and streetscape.

The plan opens up the interior to focus to the rear landscaped area and provides new contemporary living spaces including, Dining, Kitchen Scullery and Bathroom.

The Office and Laundry maximise the narrow house width. The form and materials of the new addition are simple, with a separating framed element between the old and new buildings.

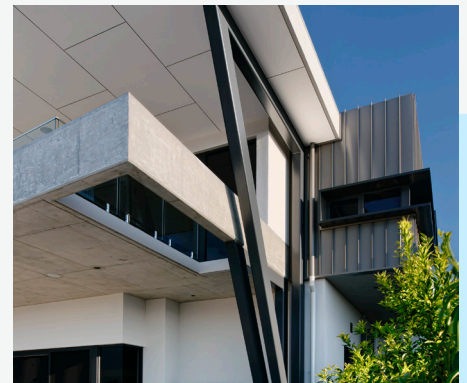


King Albert Rd, Trigg

On a challenging seaside property, with a large natural slope from front to back, retaining walls are concealed underground to produce a magnificent seamless two-storey home.

The use of raw materials, including 'off form' concrete have been incorporated into balustrades, soffits and a unique curved wall at the front of the home.

The home also incorporates large exposed metal frames and stonework to further compliment the natural materials used, whilst being refined internally with a high level of construction detailing.



The Esplanade, Mt Pleasant

This architecturally designed home provides fantastic views of the Canning River, with a beautiful, functional and spacious layout for a young family to grow and enjoy.

A key focal point of the design was the ability to 'look through' various spaces within the house towards the Canning River, providing residents with a bright, open and inviting home from multiple vantage points. The design also allows for natural light to penetrate all parts of the upper level, with floor to ceiling glass further enhancing this transparency.

The concept was designed on a single level with an undercroft for vehicle parking, a multi-use room and an area for services to be contained. Key design features include a central reflection pond, which can be viewed from the Family, Dining, Kitchen, Master Suite and Hallway. A feature glass staircase has been installed to make a sparkling entrance to the home, where we made use of the owner's airplane propeller as a light fitting, which has its own story to tell. Externally, the design is clean lined and modern, incorporating Alpolinc lining, texture coat and feature tiles. The quality of finishing on this home is of the highest standard, typical of Contour Project's reputation for exceptional craftsmanship.





Wilberforce Street, North Beach

This quality, coastal, two-storey family home incorporates modern, but warm styling with an Alfresco overlooking the swimming pool area.

This very functional home is enhanced with the installation of high quality and tasteful fittings and fixtures. The home incorporates spotted gum floors, polished plaster, stonework and natural timber linings to enhance the warm feel of the interiors.

The attention to detail achieved is typical of the quality of construction that Contour Projects is renowned for.

CONTOUR

UNMISTAKABLY YOURS, DISTINCTLY CONTOUR.

9444 5389

ADMIN@CONTOURPROJECTS.NET

CONTOURPROJECTS.NET